

# Staining Machine MSM

The most universal unit  
easy to operate



Microtomes

Cryostats

Paraffin

Embedding Centers

Tissue processors

**Stainers**

▶ **MSM**

MAS

Cover slipper

Knife sharpener

Floating bath

Slide warmer

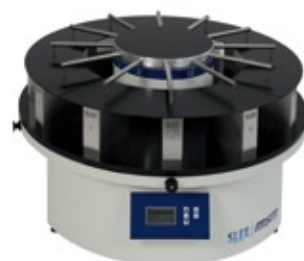
# Staining Machine MSM

The most universal unit  
easy to operate

Universal unit with reduced staining time for better stain reproducibility.  
Usable for histology and cytology.

- ▶ Up to 1150 slides per hour
- ▶ 10 staining programs, free programmable
- ▶ Display and operating panel with programming keys
- ▶ LCD display with 4 lines and only 5 operating keys, free programmable
- ▶ Possibility to store up to 10 programs with individual rest and dripping time for all baths
- ▶ Display of active baths and remaining time
- ▶ Possibility of a start delay of up to 99 hours
- ▶ All exterior parts are powder coated in RAL 9002
- ▶ Cuvette locking made of black PVC
- ▶ 12 stainless steel cuvettes, 150 x 50 x 120 mm, 400 ml content
- ▶ 1 transport basket is included, its capacity is 40 standard size micro slides (20 or 50 optional), standard size 76 x 26 mm
- ▶ Rear connection possibility for hose (100 mm dia.)
- ▶ Electronic control with multi power supply 100 – 240 V, 50/60 Hz (worldwide operation without power adjustment)
- ▶ In case of power failure the basket is moved to a programmable position
- ▶ Stainless steel baskets for receiving the micro slides. They will be filled outside and then closed with a snap lock. Filled baskets can now be loaded to the receiving arms provided
- ▶ Lifting unit for lifting and lowering loaded baskets and closing lids available for each cuvette
- ▶ Rotation unit moves all cuvettes in programmed sequence
- ▶ Optional:
  - 24 cuvettes
  - Perspex hood for covering moveable equipment parts during operation and as suction hood for stopping bad odours, (side opening for container loading)
  - Exhaust fan
  - Exhaust fan carbon filter
  - Up to 7 transport baskets with continuous staining

**SLEE**  
M A I N Z



MSM during staining



Cuvettes with transport basket



Transport basket for slides



Ergonomic operating panel

Weight and Dimensions	Depth x Width x Height
Dimensions (in mm)	870 x 870 x 700
Dimensions packed (in mm)	1030 x 980 x 800
Weight net	80 kg
Weight packed	140 kg
Electrical parameters	Art.-No. 12000200 230 V / 50Hz
	Art.-No. 12000201 230 V / 60Hz
	Art.-No. 12000202 115 V / 60Hz
	Art.-No. 12000203 100 V / 50Hz
	Art.-No. 12000204 100 V / 60Hz
Please ask for other units for Histopathology and consumables as well as laminar flow equipment.	

Specifications are subject to change without notice

**SLEE MEDICAL GMBH**  
P. O. Box 10 05 07  
D-55129 Mainz · Germany  
Fon +49 (0) 6131/95871-0  
Fax +49 (0) 6131/95871-0  
mail@sleemainz.com  
www.sleemainz.com